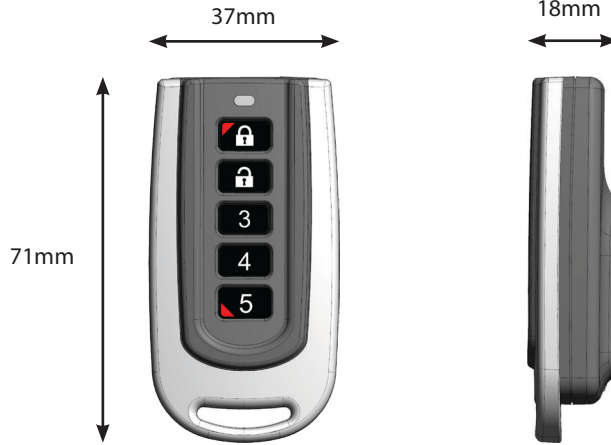




RF110 - 5 Button Smart RF Keyfob



User Guide



Certification

EN5013-3
EN50131-5-3
IP67

P/N: RF110UG Rev1.2
E&OE
Copyright © 2019

Copyright

This document is the intellectual property of Digiflex PTY LTD and is protected by copyright. All rights reserved.

Trademarks

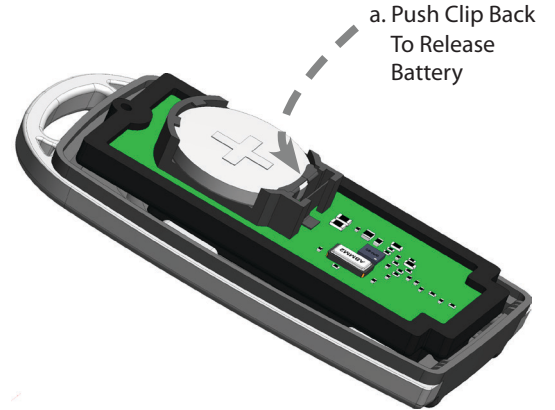
All hardware and software product names used in this document are likely to be registered trademarks and must be treated accordingly.

Determining Date Of Manufacture

DOM:1220
Built 12th week of 2020



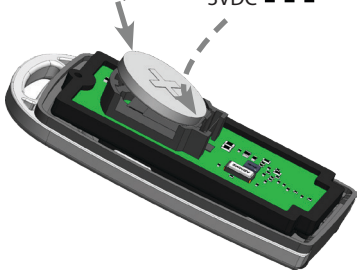
2



3

a. Insert Battery under metal clip
CR2032 Lithium
3VDC

b. Push Gently



4

b. Close Cover



5

PH #1

a. Hook Back Cover

Tighten Screw

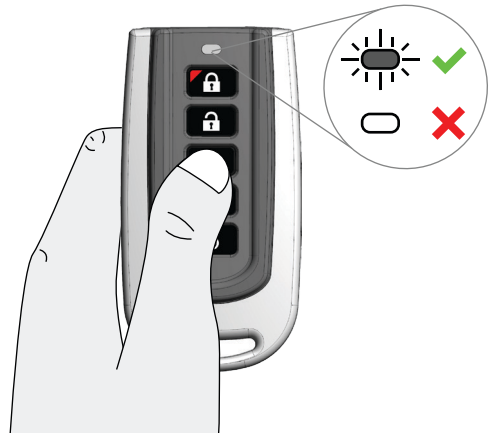


6

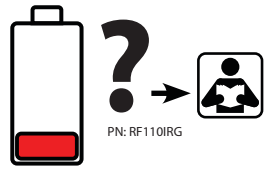
RFID
12345ABCD



7



8



LED	Battery
Fast Flash (RED)	OK
Slow flash (RED)	Replace

Panasonic CR2032 Lithium
Duracell DL2032
3.0 VDC

433.42 Mhz

For Further Information
PN: RF110IRG

CE

0-93% Non-condensing
humidity

Functional range: -10°C to +49°C
EN5013-5 Class II Only: -10°C to +40°C

IP-67
RATED