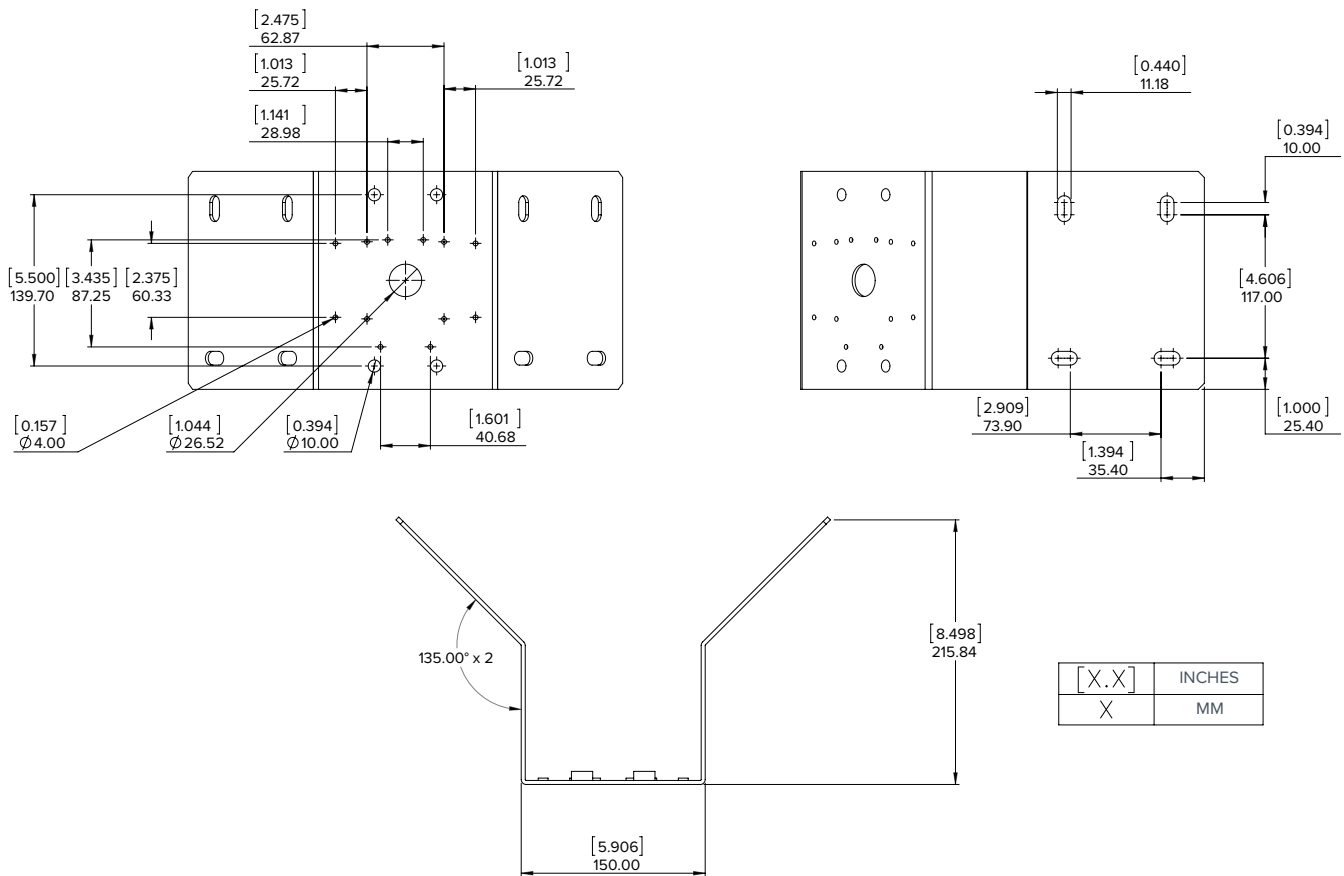


# 150507 - Corner Mounting Bracket



## CRNR-MNT 150507

Aluminum corner mounting bracket for dome cameras using a pendant wall mount and bullet cameras.

Weight: 1.24 kg (2.73 lbs)

- Female inserts
- Compatible with:
  - Pendant Wall Mount (UX-DP-WALL\_MNT) for UX-DP Pendant Dome Cameras
  - Pendant Wall Mount (BX-DP-WALL-MNT) for BX-D Dome Cameras
  - UX Bullet Cameras (UX-BO)
  - BX Bullet Camera (BX-BO)
  - Bullet Camera Junction Box (BO-JCT-BOX)
  - Thermal Bullet Cameras (SP-BO)
  - Multisensor Camera (SP-MS)
- 6"–20" Metal straps included
- Minimum pole diameter is 152.4 mm (6")
- Maximum pole diameter is 508 mm (20")
- RAL 9003 Wall mounting hardware not included

- RAL 9003 included components for IndigoVision camera and accessories:
- 4 x Hex head bolts (3/8" – 16 x 1")
  - 4 x Lock washers (3/8")
  - 4 x Flat washers (3/8")
  - 4 x Hex head bolts (M4-0.7 x 30)
  - 4 x Lock Washers (M4)
  - 4 x Flat washers (M4)